

INSTALLATION INSTRUCTIONS

FOR:

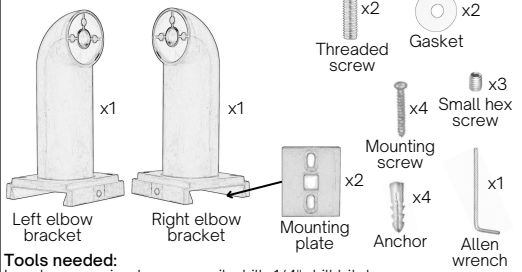
French Return Room Darkening
Elbow Brackets

Pair with Signature Collection Rod Sets



TIP:

PARTS INCLUDED:



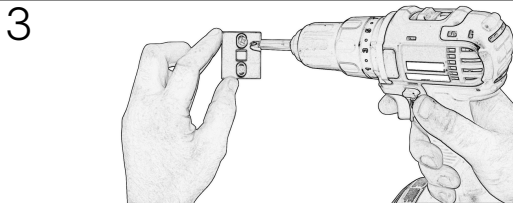
Tools needed:

Level, measuring tape, pencil, drill, 1/4" drill bit, hammer

NOTE: A hex screw can run away, so we've included one extra each!We highly recommend this being a **two-person installation** for longer rod sets.

Insert mounting plates, hex screws (secure), and threaded screws with gaskets into elbow brackets. Then attach both left and right brackets to connected rods to fully assemble your rod set. **Flip this page over to mark desired location of only left mounting plate.**

Note: Please save or responsibly recycle unused zinc metal brackets and end caps which were included with your rod sets.



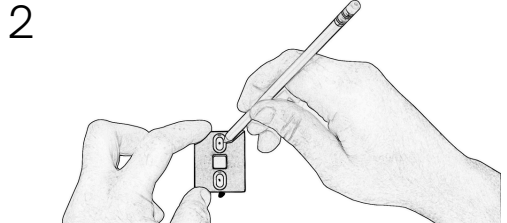
Attach only left mounting plate. For walls with studs aligned, attach mounting plate by drilling in mounting screws (as shown). Alternatively, for dry wall, pre drill 1/4" holes with drill bit. Then, simply tap anchors into place with hammer and drill in mounting screws.



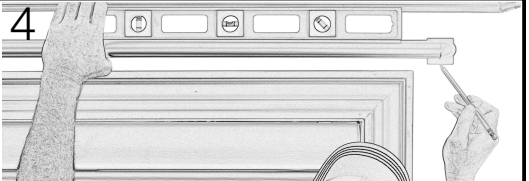
To ensure proper fit before step 5, place assembled rod on mounting plates. Elbow bracket bases are separate pieces and can slightly pivot left or right to help align when sliding down over mounting plates. Mounting plates can shift up or down to level.



Remove one elbow bracket, feed curtains on, and reattach elbow bracket. Then, slide rod over mounting plates.



Remove only left mounting plate from rod set, and mark mounting screw locations on wall using determined marking notch location. **Allow 2" clearance above so brackets can slide on mounting plates (reference step 5).**

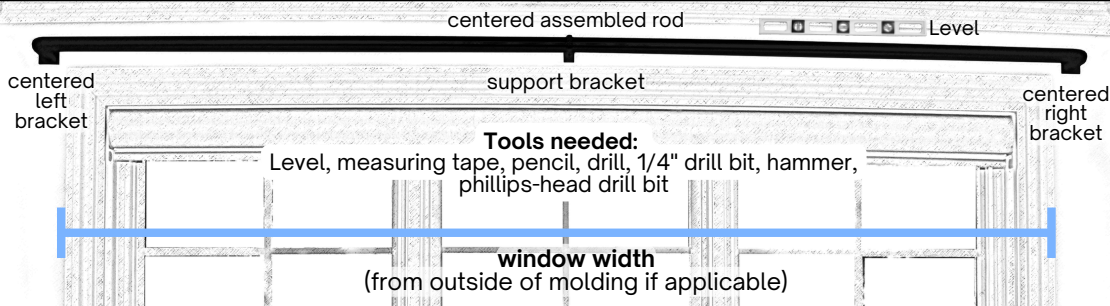


Place fully assembled rod on left mounting plate, ensure rod is level, and mark location for right mounting plate. Remove rod then repeat steps 2&3 to install right mounting plate. Center support bracket(s) are recommended for rods over 6" that connect. See rod set instructions for support bracket installation steps.



Use allen wrench to tighten all hex screws and enjoy :)

BRACKET PLACEMENT GUIDE



IMPORTANT NOTES:

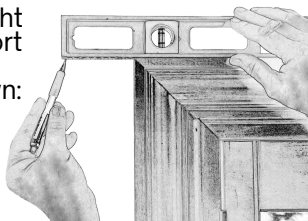
Our rods are **non-adjustable**, so it's **crucial** to follow these four steps or you will likely have to re-mount. Additionally, we **highly recommend this being a two person installation**, especially for longer rod sets so that one person can hold each side.

1 DETERMINE LEFT BRACKET DISTANCE

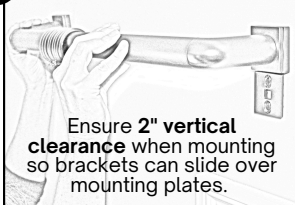
With one person on each side, hold up fully assembled rod set with elbow brackets to determine the centered distance from molding to marking notch on each side, e.g. 5 inches on each side. ***If installing solo, see our pro tip at the bottom of the page to determine the left bracket distance.***

2 DETERMINE LEFT BRACKET HEIGHT

To determine minimal height needed for use with support bracket, place level on molding and mark as shown:



TIP: Remove right elbow and hold up your curtain on one rod section with assembled left bracket to mark desired height.



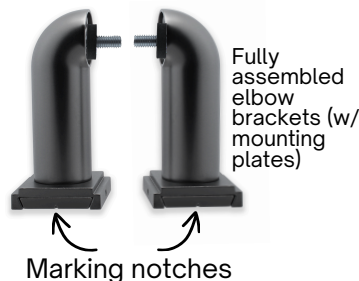
Ensure **2" vertical clearance** when mounting so brackets can slide over mounting plates.

3 MARK LEFT BRACKET LOCATION

Mark left bracket location using determined distance and desired height.

4 CONTINUE INSTALLATION

Flip back over and continue to follow steps 2-6 per installation instructions.



Marking notches



PRO TIP:

$$\begin{aligned} & \text{(size ordered)} \quad \text{(for brackets)} \quad \text{(as shown above)} \quad \text{(each side)} \\ & \text{rod length (in)} + 1 \text{ (in)} - \text{window width (in)} \div 2 \\ & = \text{left bracket distance from molding (in)} \end{aligned}$$

EXAMPLE:

Rod size: 7ft
Window width: 75"

$$84 \text{ (in)} + 1 \text{ (in)} - 75 \text{ (in)} \div 2 = 5 \text{ (in)}$$