

V7.1

BLASTHOME™

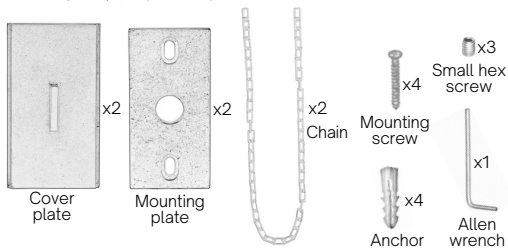
## INSTALLATION INSTRUCTIONS

FOR:

Chain Tiebacks

Signature Collection

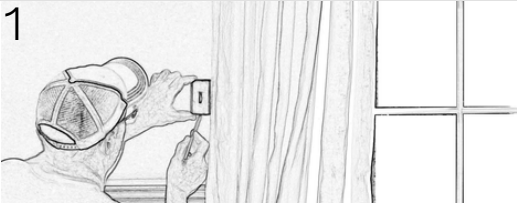
### PARTS INCLUDED:



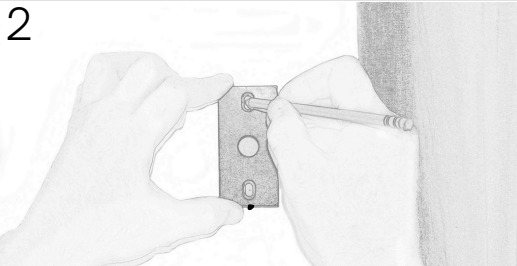
#### Tools needed:

Level, measuring tape, pencil, drill, 1/4" drill bit, hammer

**NOTE:** A hex screw can run away, so we've included one extra each!

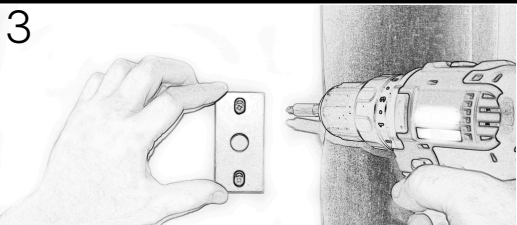


Insert mounting plate into cover plate and secure with small hex screw then mark location for tieback. We recommend that top of cover plate be halfway down the length of your curtains and that the inside edge of cover plate be even with outside edge of panel.

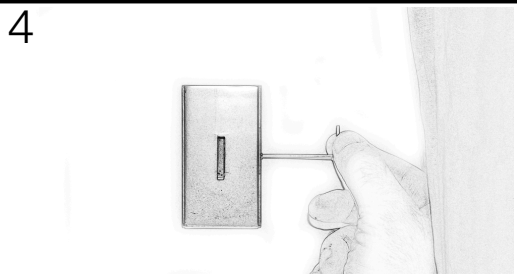


Loosen hex screw to release mounting plate. Hold up mounting plate and use pencil to mark desired location.

**TIP:** We recommend holding the allen wrench vertically (as shown in the "parts included" section) and then putting the hex screw on top for easy handling and insertion into cover plate.



For walls with studs aligned, attach mounting plate by drilling in mounting screws (as shown). Alternatively, for dry wall, pre drill 1/4" holes with drill bit. Then, simply tap anchors into place with hammer and drill in mounting screws.



Slide cover plate over mounting plate. Then, use allen wrench to tighten small hex screw into cover plate side location.



Hook one end of chain onto peg, wrap the length around the curtain, and attach other end to peg as well.



Repeat on other side, and enjoy :)